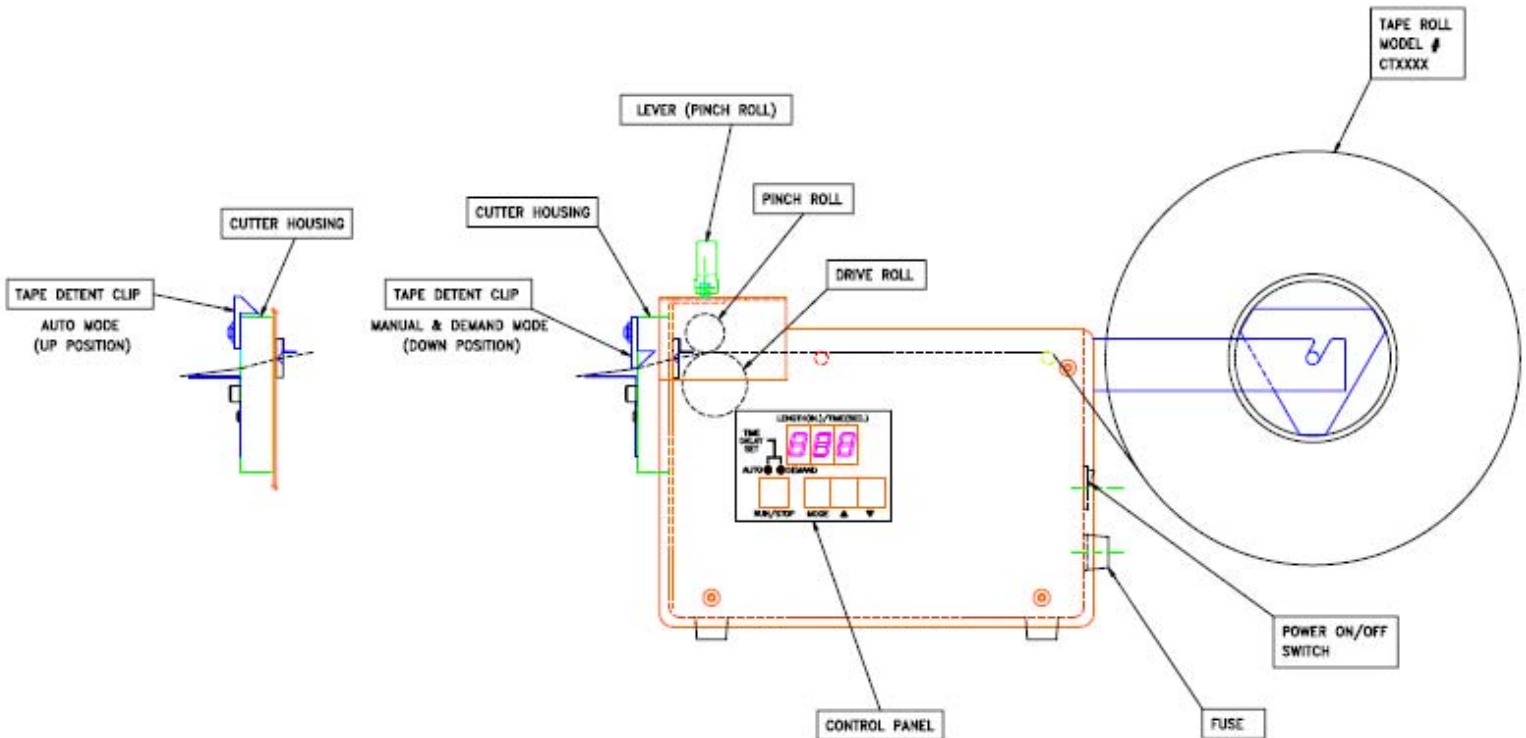


OPERATORS INSTRUCTIONS MODEL# DM200 TAPE DISPENSER



DESCRIPTION OF OPERATION

Tape Dispenser delivers medical grade, latex free, cohesive tape of pre-set lengths at pre-set time intervals in three (3) selected modes of operation.

- 1.) Manual Mode: Where operator presses the "Run/Stop" button each time a length of tape is desired.
Note: Tape Detent Clip is down.
- 2.) Demand Mode: Where a length of tape is dispensed automatically each time the operator removes it from the dispenser discharge. A pre-set time delay can be set between removal of tape length and dispensing of another if required.
Note: Tape Detent Clip is down.
- 3.) Auto Mode: Where a pre-set length of tape is dispensed continuously one after the other. A preset time delay between dispensed lengths can be set if required.
Note: Tape Detent Clip is up.

SELECTING MODE OF OPERATION

Momentarily pressing "Mode" button on panel selects mode of operation.

Two (2) red L.E.D.'s indicate mode selection.

Manual Mode - Both L.E.D.'s off.

Demand Mode – "Demand" L.E.D. on

Auto Mode - "Auto" L.E.D. on

SETTING TAPE LENGTH

The digital display normally indicates the dispensing length in inches and decimals of an inch (e.g. 4.2) unless Time Delay set is selected. Tape length is changed by pressing the up arrow (↑) or the down arrow (↓) button accordingly.

SETTING TIME DELAY

The digital display normally indicates tape length setting in inches. Change display to read time delay in seconds by pressing mode button until display changes and both red L.E.D.'s are on. Time delay is changed by pressing the up arrow (↑) button or the down arrow (↓) button accordingly. After desired time delay is set, momentarily press mode button to return to normal condition.

STARTING AND STOPPING TAPE DISPENSER

Plug Dispenser into 110V grounded outlet. Turn on the power switch, which is located on the back of the housing and the digital display will indicate power on. Then set mode of operation, tape length and time delay as previously described. To start dispenser; momentarily press "Run/Stop" button. Dispenser will deliver tape in the mode of operation selected. To stop dispenser, press "Run/Stop" button until L.E.D. is off then release.

NOTE: MODE OF OPERATION, TAPE LENGTH OR TIME DELAY SETTINGS CANNOT BE CHANGED UNLESS DISPENSER IS IN A STOPPED POSITION.

LOADING TAPE

Mount tape roll on Tape Roll Holder (triangular hub) with tape unwinding from the bottom of the roll. Place pinch (nip) roll release lever in "down" position lifting the pinch (nip) roll from the drive roll. Thread the tape as illustrated between guides and rolls and out through the cutter housing. Pull tape straight and place roller release lever in "up" (run) position.

NOTE: THE COATED SIDE OF THE TAPE SHOULD FACE UP. THE PAPER SIDE OF THE TAPE SHOULD FACE DOWN.

TAPE DETENT CLIP

Normally in down position, to hold tape length in discharge position. Clip should be in up position when operating in "Auto Mode".

Trouble Shooting

IN CASE OF JAMMING

1. Shut power to machine off by pressing on-off switch to off position. Disconnect from power supply.
2. Move nip roll release lever to “down” position lifting the pinch (nip) roll from the drive roll.
3. Turn tape roll to back tape from dispenser (to remove the tape length from the machine). Be careful not to tear tape off in the dispenser.
4. Once jam has been removed cut back roll and reinsert paper into the dispenser.

NOT CUTTING

1. Shut power to machine off by pressing on-off switch to off position. Disconnect from power supply.
2. Move nip roll release lever to “down” position lifting the pinch (nip) roll from the drive roll.
3. Turn tape roll to back tape from dispenser (to remove the tape length from the machine). Be careful not to tear tape off in the dispenser.
4. Remove cutter assembly.
5. Inspect condition of cutting blade (ie. Blade movement, sharpness, damage), replace or repair as necessary
6. Clean as necessary.
7. Carefully reinstall cutter assembly (take care not to damage electrical connection)

TAPE NOT ADVANCING

Condition One

1. Make sure nip roll release lever is in “up” position lowering the pinch (nip) roll from the drive roll.

Condition Two

1. Shut power to machine off by pressing on-off switch to off position. Disconnect from power supply.
2. Move nip roll release lever to “down” position lifting the pinch (nip) roll from the drive roll.
3. Remove left side cover.
4. Inspect timing belt.
5. Adjust or replace as necessary.
6. Move nip roll release lever to “up” position lowering the pinch (nip) roll from the drive roll.
7. Reinstall left side cover.

NO POWER WHEN TURNED ON

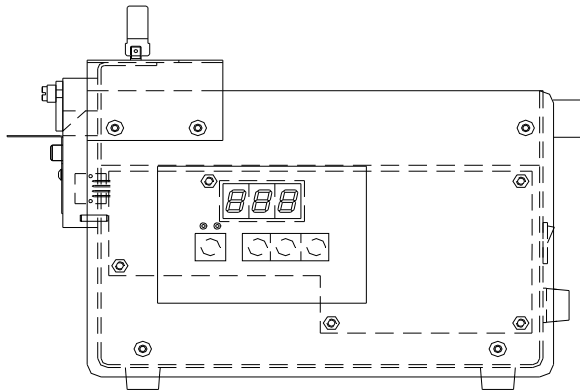
1. Make sure cord is plugged into a working outlet.
2. Make sure power switch is in the ON position (toggle to make sure switch is fully in on position)

If Power is not restore continue to 3.

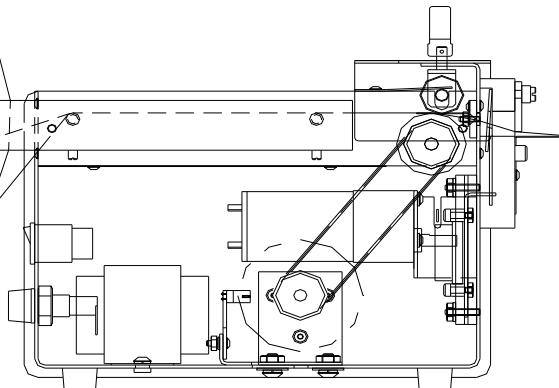
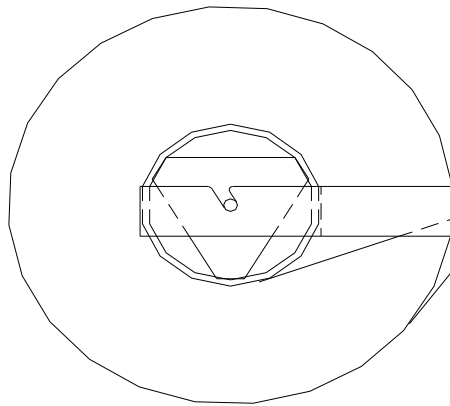
3. Shut power to machine off by pressing on-off switch to off position. Disconnect from power supply.
4. Remove and inspect fuse, replace if blown (Type 313, 250mA / 250V).
5. Reconnect to power supply and turn ON.

TAPE LENGTH IS INCORRECT

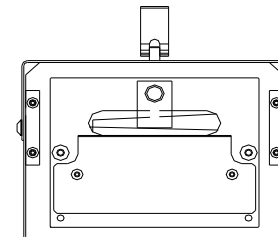
1. Shut power to machine off by pressing on-off switch to off position. Disconnect from power supply.
2. Remove left side cover.
3. Inspect encoder wheel.
4. Clean with compressed air.
5. Take care to not damage or bend encoder wheel.
6. Reinstall left side cover and test




EXTERIOR RIGHT SIDE VIEW



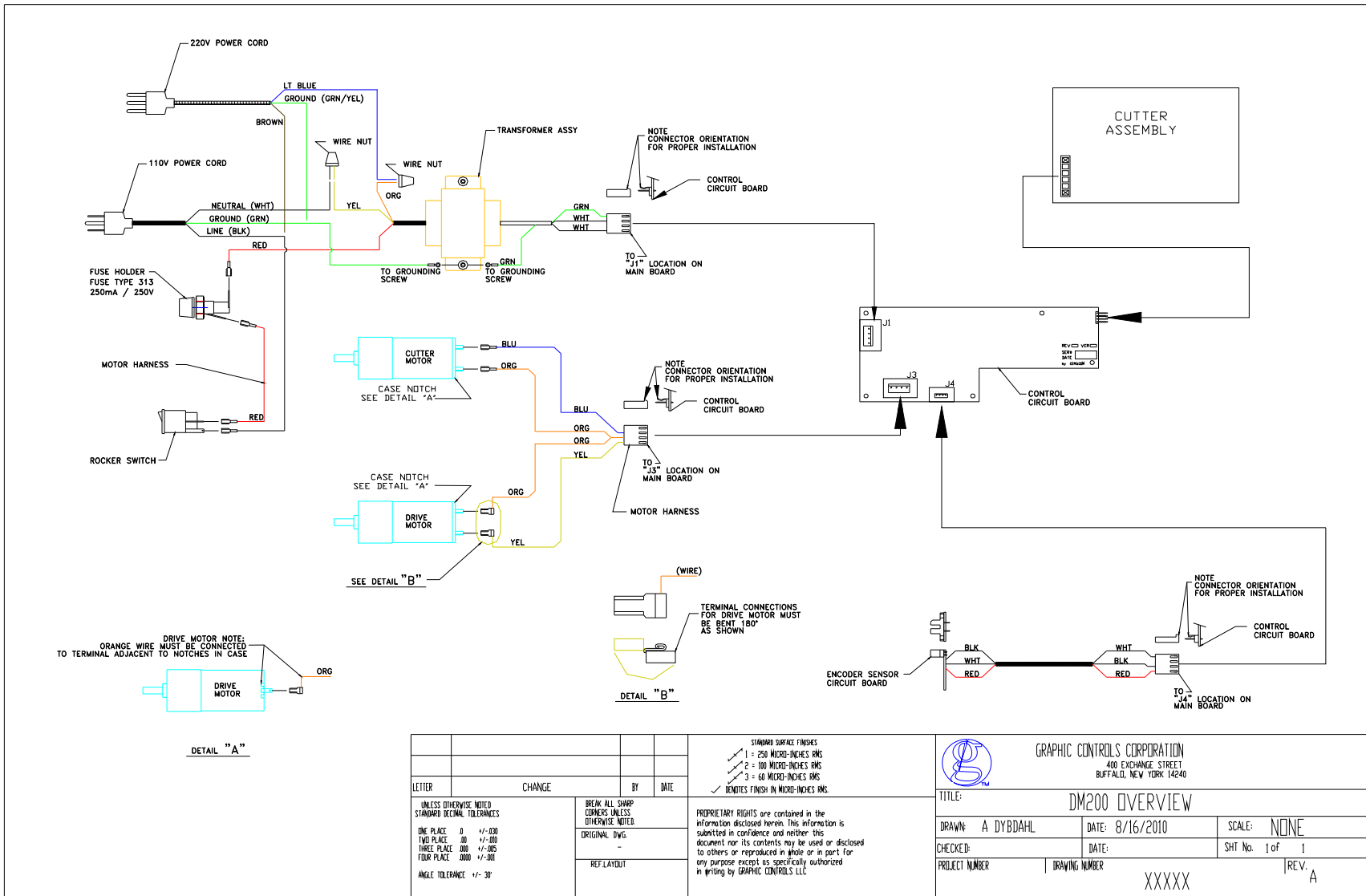
INTERIOR LEFT SIDE VIEW



FRONT VIEW (PARTIAL)

				STANDARD SURFACE FINISHES 1 = 250 MICRO-INCHES RMS 2 = 100 MICRO-INCHES RMS 3 = 60 MICRO-INCHES RMS ◊ DENOTES FINISH IN MICRO-INCHES RMS		 GRAPHIC CONTROLS CORPORATION 400 EXCHANGE STREET BUFFALO, NEW YORK 14240	
LETTER	CHANGE	BY	DATE	PROPRIETARY RIGHTS are contained in the information disclosed herein. This information is submitted in confidence and neither this document nor its contents may be used or disclosed to others or reproduced in whole or in part for any purpose except as specifically authorized in writing by GRAPHIC CONTROLS LLC.		TITLE: DM200 OVERVIEW	
UNLESS OTHERWISE NOTED STANDARD DECIMAL TOLERANCES ONE PLACE 0 +/- .030 TWO PLACE .00 +/- .010 THREE PLACE .000 +/- .005 FOUR PLACE .0000 +/- .001 ANGLE TOLERANCE +/- .30°		BREAK ALL SHARP CORNERS UNLESS OTHERWISE NOTED. ORIGINAL DWG. - REF LAYOUT		DRAWN: A DYBDAHL DATE: 8/16/2010 SCALE: NONE		CHECKED: _____ DATE: _____ SHT No. 1 of 1	
				PROJECT NUMBER DRAWING NUMBER XXXXXX		REV. A	

Graphic Controls LLC 400 Exchange St Buffalo N.Y. 14204
 Phone: 716-835-7500 FAX: 716-847-7565



LETTER	CHANGE	BY	DATE

STANDARD SURFACE FINISHES
 1 = 250 MICRO-INCHES RMS
 2 = 100 MICRO-INCHES RMS
 3 = 60 MICRO-INCHES RMS
 BENT/YES FINISH IN MICRO-INCHES RMS

UNLESS OTHERWISE NOTED
 STANDARD DECIMAL TOLERANCES
 ONE PLACE 0 +/- .030
 TWO PLACE .00 +/- .005
 THREE PLACE .000 +/- .002
 FOUR PLACE .0000 +/- .001
 ANGLE TOLERANCE +/- .30°

BREAK ALL SHARP CORNERS UNLESS OTHERWISE NOTED
 ORIGINAL DWG. -
 REF. LAYOUT -

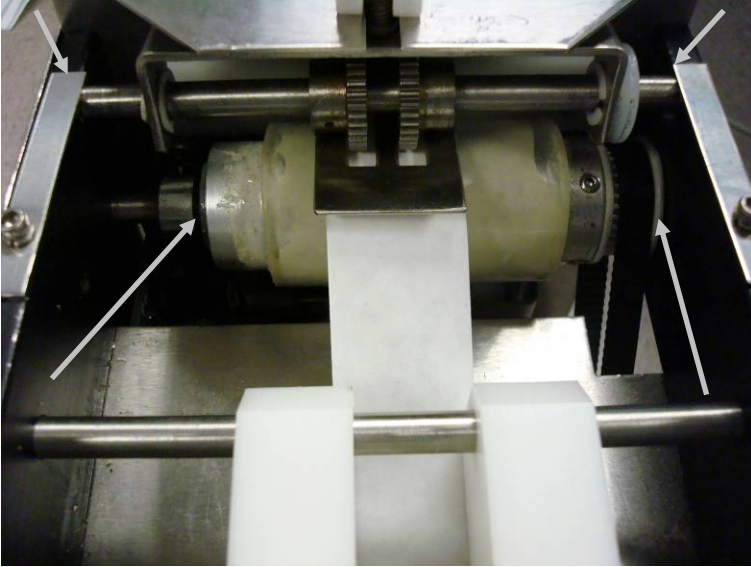
PROPRIETARY RIGHTS are contained in the information disclosed herein. This information is submitted in confidence and neither this document nor its contents may be used or disclosed to others or reproduced in whole or in part for any purpose except as specifically authorized in writing by GRAPHIC CONTROLS LLC.

GRAPHIC CONTROLS CORPORATION
 400 EXCHANGE STREET
 BUFFALO, NEW YORK 14240

TITLE: DM200 OVERVIEW
 DRAWN: A DYBDAHL DATE: 8/16/2010 SCALE: NONE
 CHECKED: DATE: SHT No. 1 of 1
 PROJECT NUMBER DRAWING NUMBER XXXXX REV. A

Graphic Controls LLC 400 Exchange St Buffalo N.Y. 14204
 Phone: 716-835-7500 FAX: 716-847-7565

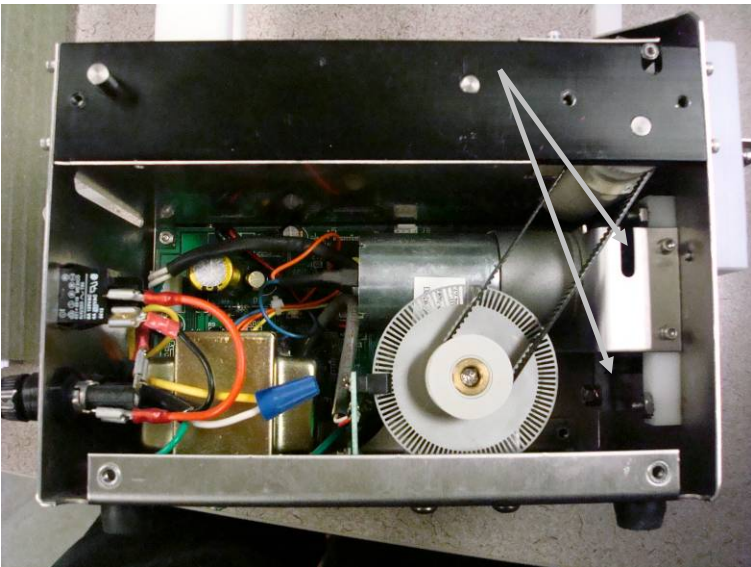
Cleaning Procedure



When you have trouble with your Tape Dispenser, a good rule to follow is "Clean it first." Many problems are caused by dust, lint or tape ends that have collected on the working parts of the machine.

Simply brushing lint and dust from the machine each time it is used is a good way to prevent many problems. A pair of tweezers can be used to remove pieces of tape that cannot be brushed away. Cans of pressurized air are also available to blow dust and lint away.

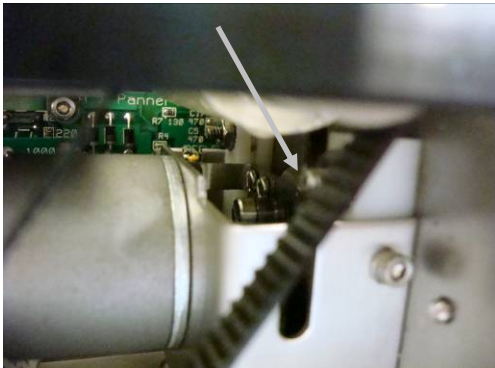
In time, lint and dust that are allowed to accumulate in a Tape Dispenser can become soaked with oil and/or lubricant and interfere with the operation of the machine. When this gummy grime is removed, the machine will work more freely, and adjustment may not be necessary. Removing this unwanted build-up requires more care and time than everyday maintenance.



There are six bearings that need to be oiled on a regular basis (every 150 to 200hrs of use). The bearings are shown in the picture to the left and designated by the arrows.

When oiling the bearings apply one to two drops of oil per bearing, run the dispenser to distribute the oil to the bearing. (if bearings are gummed up use a mild solvent to clean bearing toughly dry and then oil bearing) After running the dispensers make sure to wipe any excess oil up to prevent the bearings from gumming up.

NOTE: Make sure to keep oil and solvents away from drive roll. Oil and solvent on drive will adversely affect the function of the dispenser and the tape. Only oil ends of drive roll were bushings are.



WARNINGS



TOP WARNING LABEL (1) REQ'D.
LOCATE TOP R.H. PINCH ROLL COVER



FRONT WARNING LABEL (2) REQ'D.
LOCATE TOP L.H. & R.H. FACE
CORNERS OF CUTTER HOUSING



REAR WARNING LABEL (1) REQ'D.
LOCATE REAR L.H. BELOW SERIAL NUMBER

Spare Parts available for purchase – call customer service at 800-669-1535 for details.

Graphic Controls LLC 400 Exchange St Buffalo N.Y. 14204
Phone: 716-835-7500 FAX: 716-847-7565

LIMITED WARRANTY

Graphic Controls warrants all parts on the DM200 and DMEX200 Tape Dispensers against defects in design, materials, and workmanship for 120 days from the date of shipment from Graphic Controls LLC.

Our sole obligation under this warranty is limited to repair, replacement, or credit of the purchase price, at our option, for the DM200 and DMEX200 Tape Dispensers which do not perform properly the function for which they were designed.

Warranty repair, replacement, or credit is contingent upon our examination and determination that alleged defects have not been caused by misuse, abuse, improper installation or application, repair, alteration, accident or neglect in use, storage, transportation, or handling.

This warranty shall be null and void should the tape dispenser be used in operation with any parts or cohesive tape rolls other than those approved or supplied by Graphic Controls LLC.

The above warranty and remedy constitutes Graphic Controls LLC sole liability hereunder and are in lieu and exclusive of all other warranties and remedies expressed, implied or statutory, including, but not limited to, those of merchantability and fitness for a particular purpose. In no event shall Graphic Controls LLC be liable for losses based upon downtime, overhead, lost labor, damage to goods, lost production or profits, or consequential damages of any kind arising out of or in connection with this transaction.

Graphic Controls reserves the right to revise this policy at any time.